

An aerial photograph of a city construction site. In the foreground, a large area of dirt and rubble is being cleared by a yellow excavator. Several blue and yellow skips are scattered around. In the middle ground, a large brick building is under construction, with a sign that reads 'THE TETLEY'. To the left, a modern blue and white building is visible. The background shows a dense urban area with various buildings and streets. A large white logo is overlaid on the center of the image.

R RHODAR

Specialist Enabling Works



Aire Park:

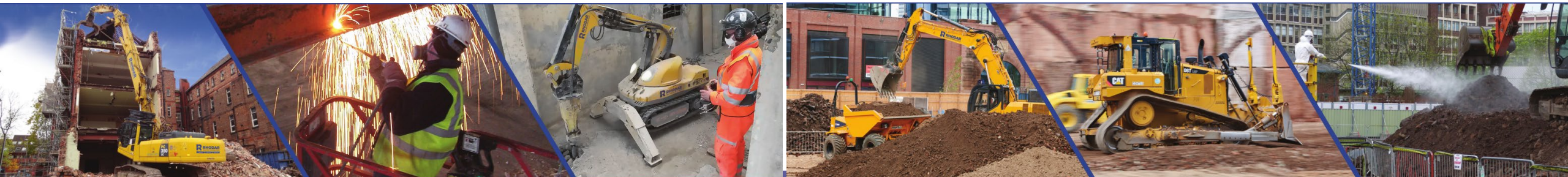
Aphased approach to urban regeneration

Tom Middleton

Contaminated Land Remediation Project Manager

Chris Cooke

Senior BDM Major Projects



Established 1976



Group Turnover
2023
£64m+

Employee
Ownership Trust
(EOT)



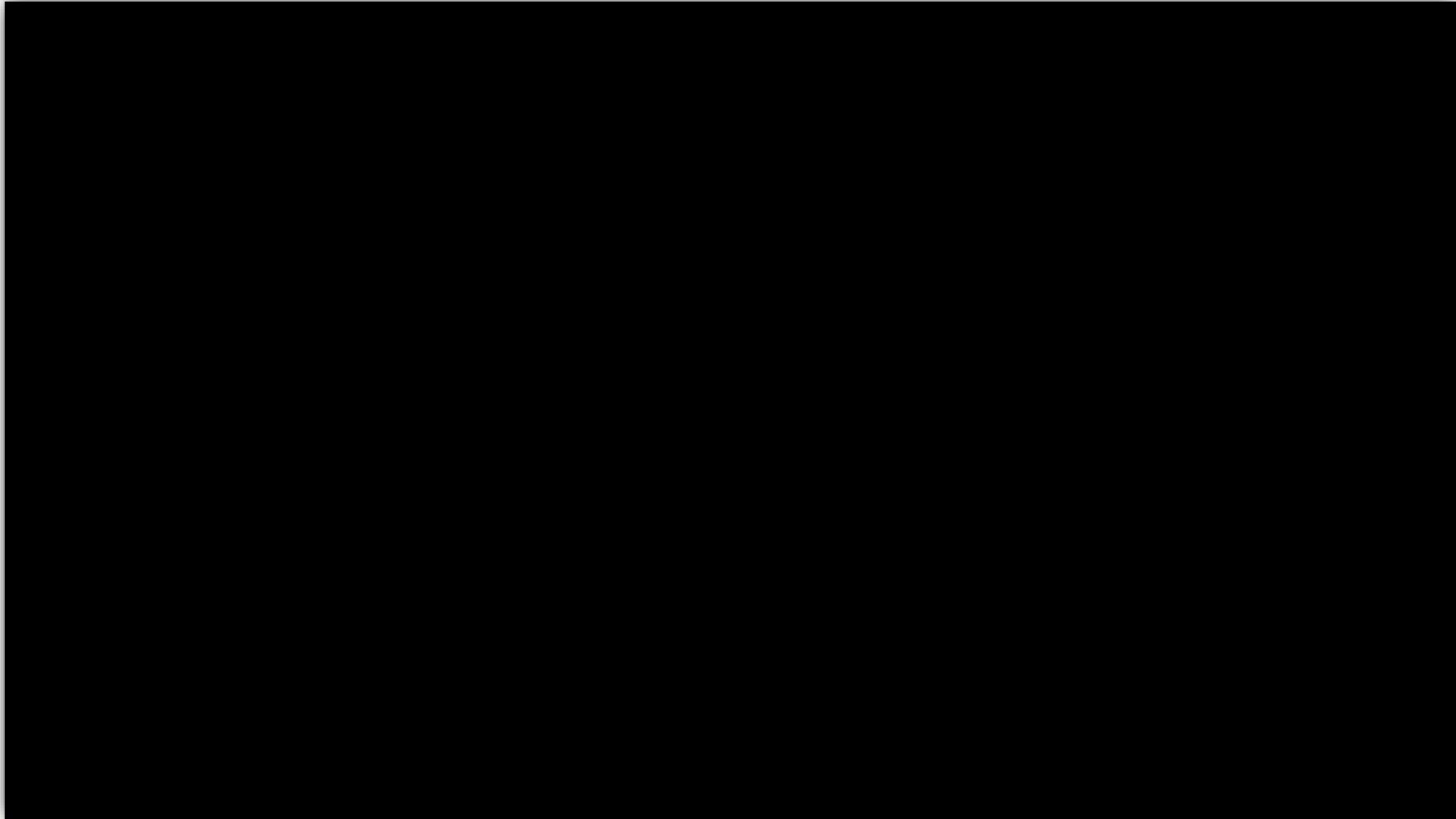
Aire Park: A phased approach to urban regeneration



2018



Aire Park: A phased approach to urban regeneration



Aire Park: A phased approach to urban regeneration



2023



Achieving excellence by working together

Aire Park: A phased approach to urban regeneration

Successful Petrol Filling Station Remediation



- Bore hole decommissioning
- Tanks decommissioning, removal, and validation
- Successful watching brief enactment
- Geo-environmental and geo-technical testing

Phase 3b – Huntsman House

- Demolition
- R2 Plot & preparatory works to South Park



Looking ahead...

Phase 4 – Crown Hotel

- Façade retention
- Partial demolition
- Excavation
- Development platform construction



Looking ahead...

Phase 5 – Waide's Yard

- Interaction with regulators
- Demolition of vacant industrial buildings
- Groundwater remediation.
- Earthworks.



Aire Park: A phased approach to urban regeneration



Thank you,
Any Questions?