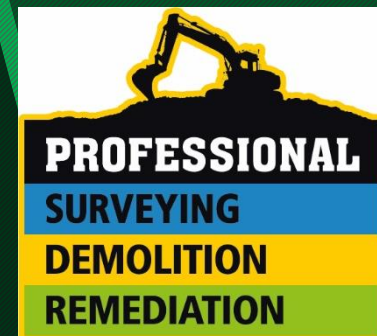


Challenges of dealing with a Historic Spoil Tip

Jane Crossley – Technical Manager PRL

- Introduction
- The Site
- Consultation
 - Regulatory
 - Community
- Permitting & Monitoring
- Emergency Planning
- Verification
- Remediation of wider site



The Site



www.britainfromabove.org.uk/image/EPW031033

© Historic England

PROFESSIONAL
SURVEYING
DEMOLITION
REMEDICATION

Sensitive Receptors

Potential Receptor Map - Distance to Centre of Burning Spoil

Haying Wood
(from centre of wood) 172m



Playing Area 412m

St Lukes C of E
Primary School -
500m

Residential Property
422 m spoil

Garage, 235m

Residential Area off Pepper Street
360m



PROFESSIONAL
SURVEYING
DEMOLITION
REMEDICATION

Community Consultation

- Council
- Environment Agency
- Ward Councillors
- Parish Councils (Silverdale & Keele)
- Local Fire Brigade
- School
- Local Residents
 - Letter Drop
 - Meeting
 - Website



Permitting & Monitoring

- Bespoke permit
- Monitoring
 - Dust
 - Vapours / gases
 - Face fitted masks
 - In cab monitors
 - Tenax Tubes
 - Temperature
 - Vibration & Noise



Emergency Procedures

- Staff induction
- Liaison with Local Fire Authority
- Closure of Hollywood Lane
- Vegetation clearance
- Inert material stockpile
- Storage of combustible material
- Stopping work

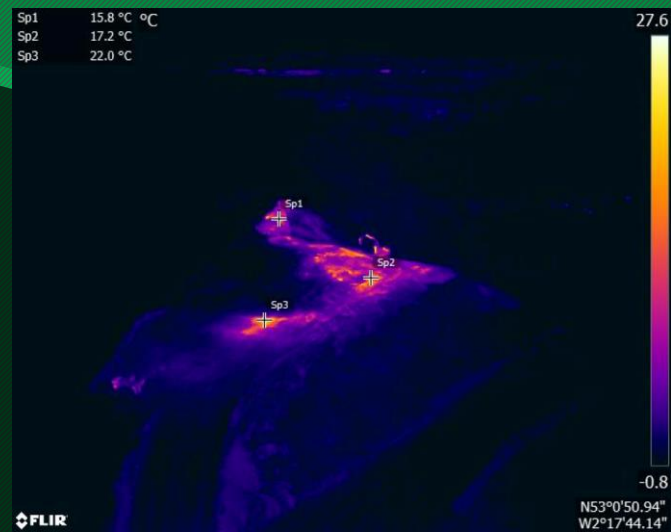
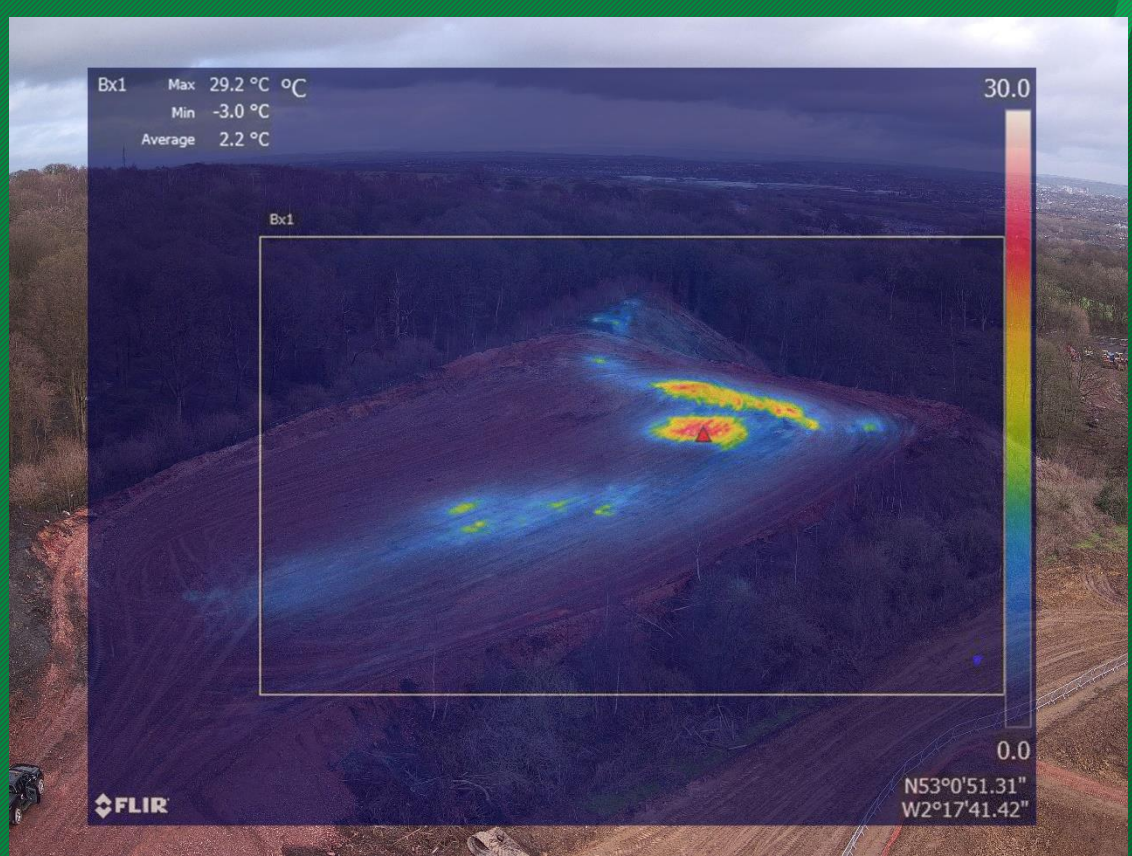


Verification

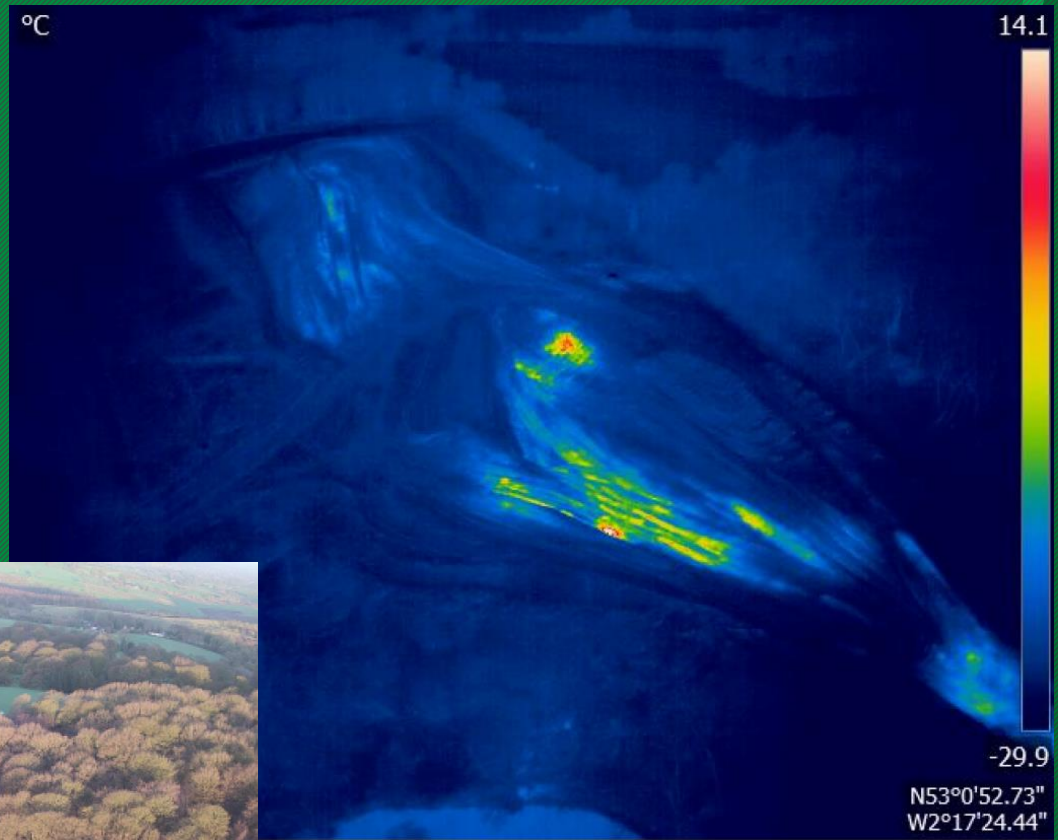
- Thermal Imaging
- Loss of Ignition (2Mj/Kg unlikely to burn / 10Mj/Kg combustible)
- Reduction of potential air voids
- Temperature



Thermal Images At the Beginning



Thermal Images March 2019





Site Progress Photographs





PROFESSIONAL
SURVEYING
DEMOLITION
REMEDIATION

Wider Site - Remediation

- Excavation and Turnover of Made ground
- Removal of Obstructions
- Raising of Site levels
- Japanese Knotweed
- Trees with TPOs
- Overhead Cables
- Disused railway Tunnel
- Swan Mussels
- Badgers
- Adjacent landfill



Key Points

- Removed hazard
- Unlocked site for development
- Sustainable



Any Questions
?

